

2021



HURRICANE READY GUIDE



DEVELOP YOUR
FAMILY PLAN
LARGE DETAILED
COUNTY MAPS

2021 MAX DEFENDER 8 HURRICANE READY GUIDE

Welcome

Thanks for picking up the [2021 MAX Defender 8 Hurricane Ready Guide](#).

It's the time of year when all of us start looking toward the tropics and wondering what this hurricane season has in store.

That is why it is so important to equip and prepare yourself with the most recent and best possible information – the kind of information you'll find in this guide.

For the most part, all of us who live in Central Florida have been lucky the past couple of years.

In addition to this guide, [Max Defender 8 will keep you informed on TV, on WFLA.com and through social media](#) such as Twitter and Facebook.

Turn to us before, during, and after a hurricane, tropical storm or severe weather threatens. But no matter what is predicted, it only takes one storm. That impact could change your life forever if you and your family are not prepared. It's vital to have a survival kit and most importantly, stay informed.

Thanks again for picking up the Max Defender 8 2021 Hurricane Guide. And remember: The idea is to [get ready and stay ready](#), whether the big storms threaten us this season or not.



EMERGENCY CONTACT LIST

NUMBERS TO KEEP ON HAND

American Red Cross Disaster Assistance	1-866-438-4636
FEMA	1-800-525-0321
Florida Dept. Agriculture & Consumer Services	1-800-435-7352
Florida Dept. Financial Services Consumer Help Line	1-800-342-2762 TDD* 1-800-640-0886
Florida Div. Emergency Management	1-850-413-9969
Hurricane Help Line	1-800-227-8676
National Flood Insurance Program	1-888-356-6329 TDD* 1-800-427-5593
Poison Control Hot Line	1-800-222-1222
Max Defender 8 Hurricane Hot Line	1-800-528-0808
TRAFFIC and Travel Information	511 (FROM CELL PHONE)

RADIO PARTNERS

THE EAGLE 107.3 FM

SPIRIT FM 90.5

SOURCES:

INFORMATION RESOURCES PROVIDED BY: TAMPA BAY REGIONAL PLANNING COUNCIL AND EMERGENCY MANAGEMENT OPERATIONS OF THE FOLLOWING COUNTIES- CITRUS, DESOTO, HARDEE, HERNANDO, HIGHLANDS, HILLSBOROUGH, MANATEE, PASCO, PINELLAS, POLK AND SARASOTA. ADDITIONAL SOURCES: AMERICAN RED CROSS; DOMINION ENERGY; FEMA; FLASH.ORG; FLORIDA DISASTER.ORG; FLORIDA DEPARTMENT OF FINANCIAL SERVICES; NATIONAL ENDOWMENT FOR FINANCIAL EDUCATION; NATIONAL HURRICANE CENTER; POLK COUNTY SOLID WASTE DEPARTMENT; SPCA OF TAMPA BAY; USDA'S NATIONAL FOOD SAFETY DATABASE; MAPS COURTESY OF TAMPA BAY REGIONAL PLANNING COUNCIL.

MAX DEFENDER RADAR 8



THE MOST
ADVANCED
WEATHER RADAR
IN FLORIDA



TABLE OF CONTENTS FOR YOUR NAVIGATION NEEDS

Article

Developing a Family Plan	6
Protect Yourself	8
Protect Your Pets	11
Protect Your Home	14
Special Needs	18
Planning Prescriptions	20
Consumer Protection	21
Flood Safety	22
Insurance Information	24
Protecting Documents	26
Must Have Supplies	29
Generator Safety	30

Maps

Using Your County Map	31
Citrus County	33
Hernando County	35
Hillsborough County	37
Manatee County	41
Pasco County	43
Pinellas County	45
Polk County	49
Sarasota County	51



JENNIFER LEIGH

DEVELOPING A FAMILY PLAN

A Guide to Protecting Your Family

Each hurricane season, review, practice and update your Family Plan. You will need to know your evacuation zone, obtain emergency supplies, and take steps to protect your home. Remember to make plans for friends or family members with special needs, including your pets. Everyone, children included, should have a role.

EVACUATION

Check the maps inside this guide to see **which evacuation zone** you live in. This will determine when and if you need to evacuate during a storm. Remember: Most mobile home residents must evacuate, regardless of location. You should **plan now where to evacuate** your family. Make arrangements to stay with friends or relatives who live in a hurricane-safe zone. Have **ready food, water and must-have supplies** (see page 10). If you evacuate to an inland hotel, ask about special hurricane policies. Most importantly, make sure your destination is NOT in an evacuation zone.

LEAVING THE AREA

Leave as early as possible. Have an **alternate route planned**. If flying, prepare for airport closings and/or canceled flights. Remember, storms can **change direction quickly and without warning**, so be careful and avoid driving directly into a storm's new path. Tune to our Radio Partners (listed on page 2 of this guide) to stay informed on traffic conditions.

PUBLIC SHELTERS

An evacuation shelter should be your last resort. Keep in mind, different shelters may open at different times, depending on size and intensity of a storm. Do not go until an official announces a specific shelter has opened. Expect shelters to be crowded and uncomfortable.

- **Be sure to bring:**
 - Pillows and blankets or sleeping bag
 - Special dietary foods, water and prescription medicines
 - A change of clothes and personal hygiene items
 - Flashlight, radio and extra batteries
 - Infant necessities and quiet toys for children
 - Important papers
- Note: Alcohol and firearms are **not** allowed; most shelters will **not** allow pets.

IF YOU MUST EVACUATE

- Do not panic if an evacuation order is given. Make sure you give yourself enough time to leave before the weather turns bad.
 - **DO NOT take chances with your life.**
- Turn off your electricity, water and gas if officials tell you to do so. Lock windows and doors.

“DO NOT TAKE CHANCES WITH YOUR LIFE.”

IF YOU DO NOT EVACUATE

Make sure windows are protected and home is secured. **Clean containers for drinking water** and your bathtub for storing clean water. Plan on three gallons per person, per day for all uses. Offer your home to friends or relatives who need to evacuate. Have at least a two-week supply of nonperishable foods, including a nonelectric can opener and corded nonelectric phone.



BUSINESS OWNERS

Every business also should have a **Disaster Plan**. For a guide, contact your local emergency management agency, Chamber of Commerce or go to www.sba.gov/content/disaster-planning



REBECCA BARRY

PROTECT YOURSELF

During & After the Storm

DURING THE STORM

- Stay indoors**, away from windows, skylights and glass doors, until the storm has officially passed. Be careful; it might appear the storm is over, but you may actually be in the eye of the hurricane. It may seem calm, but the weather could deteriorate quickly. The calm may only last 10-20 minutes.
- If you lose power** News Channel 8 weather coverage and news updates are available on your smart phone or tablet. Download our MAX Defender 8 Weather app and WFLA News app for free right now.
- Do not** use candles or kerosene lamps.
- Find a safe-room** in your home, usually an interior, windowless, reinforced room such as a closet or bathroom on the lower floor.
- Stay in your safe-room** even if you hear breaking glass. Do not expose yourself to the hurricane's winds.
- If your house starts to break apart**, cover yourself with a mattress and pillows. If your safe-room has a bathtub, get in the tub under a mattress.
- Use the phone for urgent calls** only. Don't use the phone if you hear thunder.
- If you are in a very tall building**, avoid the top floors as wind speeds are stronger the higher you go. Go to a safe-room. If flooding threatens your home, turn off electricity at the main breaker.
- If you lose power**, turn off major appliances, such as the air conditioner and water heater to reduce damage from surge when power is restored.



AFTER THE STORM

Be patient. It may take awhile for emergency crews to reach your neighborhood. Restoring utilities could take several weeks. Use extreme caution. There may be dangerous situations all around you.

- If your house is damaged**, do not return until it has been officially inspected.
- Find the fire extinguisher** before turning on the power.
- Avoid all** downed power lines and water puddles.
- Report** downed or sparking power lines, broken gas lines and water mains.
- Always** supervise children.
- Avoid piling debris** near power poles. This may hinder repairs. Avoid driving because of debris and road blockage.
- Open windows** and doors to ventilate your home.
- If flooding has occurred**, have an inspection before turning on the breaker.
- Let your out-of-town** emergency contact know you are alright.
- Have valid ID.** It may be required to reenter your neighborhood.
- Don't sightsee**, especially at night.



CALL BEFORE YOU DIG

You may be eager to remove large trees or other debris after a hurricane hits. But your underground utilities could pose a real danger. **More and more utilities are buried underground and some aren't buried as deep as you may think.** The result can be costly, even deadly. Before you dig, call 811 if you don't know where underground utilities are located on your property. Or go to www.sunshine811.com for more information.

FOOD AND WATER SAFETY

If power goes out, avoid opening refrigerators and freezers to keep items from spoiling and/or thawing.

If there are ice crystals on freezer items, the food can safely be refrozen.

Commercially bottled water is good indefinitely, regardless of expiration date.

Food in a refrigerator is safe if power is out for only a few hours. If the temperature inside exceeds 40°F for more than two hours, perishable foods are unsafe to eat. (Get a small thermometer to keep inside your refrigerator.)

If you're unsure whether an item has spoiled, throw it away.

Water you've bottled yourself will only be good for about a week at room temperature (two weeks in the refrigerator).

Do not drink tap water until officials have announced it is safe.

TO STERILIZE WATER:

Boil for at least one minute,

OR Add 12 drops of a 2% tincture of iodine per gallon,

OR Add 8 drops unscented household bleach (with Hypochlorite as the only active ingredient) per gallon,

OR Use water purification tablets.

ABC

PLUMBING · AIR · HEAT



Dedicated to you & your

FAMILY

CONSIDER IT DONE!

ABC Plumbing, Air & Heat proudly serves the Tampa Bay area and the surrounding suburbs. Our dedication to your family's comfort and well-being shows in the five-star service we provide from start to finish. Getting your home's systems back up and running in one visit is our top priority, that's why we come prepared with our fully-stocked, signature green trucks.

Whether you need a dependable plumber who is courteous and professional, or someone reliable to work on your A/C. With convenient day, evening, and weekend appointments to fit whatever your schedule may be, our trusted experts will get the job done right...**just call ABC.**

727-202-4462 | 4abc.com

24 hours a day | 7 days a week | For more than 70 years





LEIGH SPANN

PROTECT YOUR PETS

How it Differs From Protecting You

If conditions during a storm are not safe for you, then they're not safe for your pets either. Include your pets in your hurricane plan. Keep in mind:

Service animals are the ONLY pets allowed at most public shelters. Most motels and hotels will allow smaller pets (cats, small dogs, etc.) for an additional fee or deposit but be sure to ask before you go.

If you evacuate to a shelter, make arrangements early to board your pet at a kennel or boarding service outside hurricane evacuation zones. Don't wait until the last minute. Space will be limited, and standard boarding fees will apply.

Regardless of where you evacuate, be sure your pet is clearly identified with a current license and rabies tag on their collar. You may consider having your pet micro-chipped.

Try to keep your schedule as normal as possible.

Make sure their shots are up to date. You may need proof of vaccinations.

Pet stores can help you find shelter for exotic pets.

“INCLUDE YOUR PETS IN YOUR HURRICANE PLAN.”



PUT TOGETHER A SUPPLY KIT INCLUDING:

A pet carrier or collapsible cage (appropriate for your pet)

Newspaper and paper towels for clean up

Pet food, bottled water and any medications, enough for at least one week (don't forget bowls, a manual can opener and treats)

Small trash bags for waste

Muzzle (if necessary)

Proof of up-to-date vaccinations

Toys and other comfort items

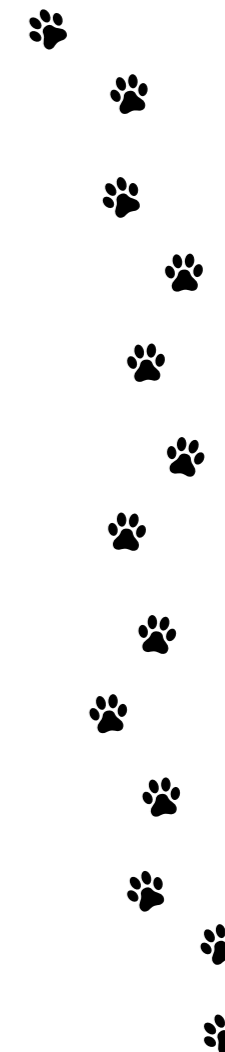
Current photo of you with your pet (as proof of ownership)

First aid kit

Cat litter, liners and pan

Mark all your pets' belongings with a water-proof marker

After the storm, The Humane Society and other animal services can help you find a lost pet or locate the owner of a pet you find. Watch your pet carefully outdoors. Familiar scents and landmarks may change, and your pet could easily get confused. Downed power lines, contaminated food and water are also real dangers. Remember, pets are part of the family; don't put them at risk. Check your county map in this guide for a list of pet friendly shelters.





PROTECT YOUR HOME

How to Prepare Your Home

There are some specific actions you should take to make your home safer. To make some of these improvements, you will have to climb in the attic or crawl space with a flashlight. You may feel more comfortable with an experienced and licensed inspector, architect, engineer or contractor inspecting your home. Whatever choice you make, take time to do this well before the storm threatens.

To withstand the forces of wind associated with severe weather, remember your ABC's:

Ancor your roof

Brace entry and garage doors

Cover your windows

ANCHOR YOUR ROOF

If your roof was **built before 1994 and is gabled**, brace all gable-end framing with horizontal and vertical beams. Also, make sure that there is wood sheathing (planks or plywood) behind the stucco of the triangular gable-end walls.

Using a caulking gun, apply a 1/4 inch bead of APA AFG-01 certified wood adhesive along an intersection of the roof deck and roof support element (rafter or truss chord) on both sides of the beam. This technique can **increase the wind uplift resistance by up to three times**, but should not be used if you are going to re-roof in the near future.

BRACE YOUR ENTRY AND GARAGE DOORS

Entry doors are easily damaged by high winds. Bolt all doors with foot and head bolts with a minimum one-inch bolt throw length.

Garage doors should be able to withstand hurricane wind loads and the impacts of flying debris. If yours does not, replace with a hurricane resistant one. Approximately **80 percent of residential hurricane wind damage starts with wind entry through garage doors.**

COVER YOUR WINDOWS

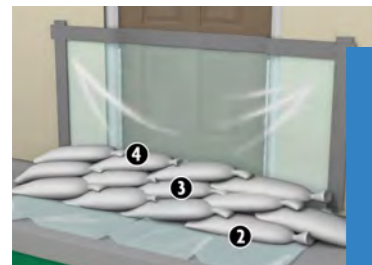
Protecting your windows is perhaps **one of the most important factors** in securing your home or office from total destruction in a hurricane or severe storm.

Make sure all doors and windows are properly caulked and/or weather stripped. Replace gravel/rock landscaping material with fire treated, shredded bark to reduce damage. **Cover all windows and glass doors** with securely fastened, impact-resistant shutters or other approved window protection systems with proper mounting fixtures or replace them with impact resistant laminated window and door systems, if feasible. Hint: You don't have to use the same system on every window. Reference: www.flash.org.



FOAM

To seal a doorway, apply expanding urethane foam to the outer edges where the door meets the frame, up to two or three feet above the ground



AFTER A HURRICANE

Don't dump debris in storm drains.

Make temporary repairs to protect your home from further damage. Cover any holes with plywood and use heavy plastic on broken windows.

If you can't make repairs yourself, check contractor's references with your insurance agent, Chamber of Commerce or Better Business Bureau.

If you rebuild, get an estimate first. Discuss payment terms and keep any receipts. You need enough insurance to cover current construction costs and you may be required to meet new building standards. Your insurance company may be able to provide assistance for these additional costs.

If you can't live in your home after a hurricane, you may be entitled to additional assistance for hotel bills, meals and other living expenses. This coverage is NOT available if damage is caused by flooding or storm surge.

SANDBAGS

- Use sandbags to anchor a sheet of plastic to protect a doorway.
- Tape plastic to the wall and across the doorway, attaching a few feet up the wall and spreading away from the foundation on the ground.
- Place the first row of sandbags on the plastic on the ground.
- Stack on the second row, covering gaps in the bottom level of bags.
- Stack the third row of sandbags on top of the second row, in line with the first row.

PROTECT YOUR HOME | 16

DYNASTY BUILDINGSOLUTIONS

813-551-1060

www.dynastybuildingsolutions.com

Licensed | Bonded | Insured

RESIDENTIAL & COMMERCIAL ROOFING

RESTORATION SERVICES

WATER EXTRACTION

STORM SEAL



CCC1330607 | CBC1262853 | CBC1264508



AMANDA
HOLLY

SPECIAL NEEDS

How to Handle Medical Needs

Register now with your county Office of Emergency Management **if you have special medical needs**. Bring at least **three days** of medical supplies you will need including: special food, water, prescriptions, nebulizers, syringes, sterile swabs and oxygen equipment. Important: Special needs shelters **do not provide hands-on medical care** so you may want to bring a caregiver with you. You may need to keep back-up medical items on hand such as a battery for ventilator and oxygen cylinders (48-hour supply).

If you require respirators or other electric-dependent medical equipment, you should make prior medical arrangements with your physician. You should also **register with your power company**. If you require oxygen or other medical supplies, check with your vendor about emergency plans.

A physician must be notified if you or someone you know **needs hospitalization**. Keep in mind there are a limited number of resources available during disasters such as hurricanes.

For home health care and homebound patients, **inform your health care provider** where you will be during a hurricane and ask about their emergency plans. Remember to take medications, written instructions regarding your care, special equipment and bedding with you if you evacuate.



ADVICE FOR OLDER ADULTS

Those who live alone, or are without the support of family or friends, must take special precautions in the event of an emergency situation. People who are frail or disabled (either mentally or physically) may need special assistance from family members, friends or social service agencies. Older adults who are also caregivers may require outside assistance. Excessive stress and anxiety can contribute to **increased episodes of illness**- particularly for persons with heart disease and other illnesses. If an older adult lives in a nursing home, assisted living facility or boarding home, the **administrator should be contacted** to learn about the disaster plan.

TRANSPORTATION

If you do not have transportation or are unable to drive, **assistance may be available**. Each local county offers some type of help to make sure you can get out of the storm's path. Check with your **county's Office of Emergency Management** (phone numbers are on the map pages of this guide) to find detailed information about routes to assist you in the event of an evacuation.



**JOSH
BENSON**

PLANNING FOR PRESCRIPTIONS

How to Stay Ahead with Your Meds

For many people, **medication isn't a luxury** – it's a necessity. Running out could lead to other health complications or even send them **to the hospital**. That's why it's important to have an adequate supply of medicine available, especially during hurricane season.

It's always a good idea to order prescription refills **5-7 days before your medicine will run out**.

If a hurricane hits and your regular pharmacy isn't open, **bring your prescription bottle to another pharmacy**. The staff will use the information on the label to refill your medication. Also remember to bring your insurance card.

Even if you're forced to evacuate, you can still refill your prescriptions. Try a new pharmacy wherever you decide to evacuate. They may be able to **access your prescription records electronically** and help you with emergency needs. Ordering refills online or over the phone is also a good idea for fast service.

But the best advice is: **Never wait until the last minute** to refill your medicine. It's the only way to ensure you continue taking your medication as your doctor prescribed.

“**NEVER WAIT
UNTIL THE
LAST MINUTE.**”

CONSUMER PROTECTION

Repairing your home after a disaster can be very stressful. Here are a few ways to help protect yourself from unlicensed contractors and con artists:

Be extremely cautious of anyone coming to your home uninvited and offering to do home repairs.

Obtain a written estimate or contract.

Never pay with cash.

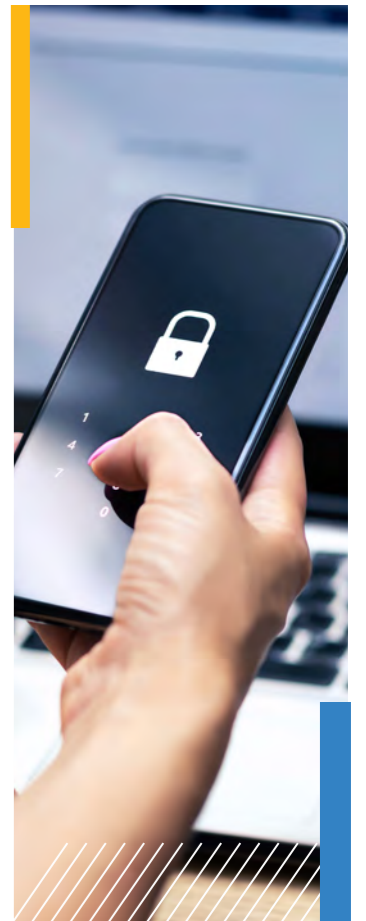
Be sure to note an address, telephone number and license numbers.

Ask for references and check them out.

Insist on start and completion dates in the contract, and do not pay the final balance until the work is completed to your satisfaction.

If you suspect insurance fraud, call the Florida Department of Financial Services Consumer Help Line at 1-800-342-2762 or visit www.myfloridacfo.com/fraud.

If you suspect you've encountered scammers, call the Attorney General's office or visit myfloridalegal.com.





HEATHER MELENDEZ

FLOOD SAFETY

For All Our Florida Flood Zones

Avoid flooded areas, high velocity flow areas, and areas subject to sudden flooding. Do not attempt to cross flowing streams.

Roads may not be intact under flood waters and the depth of the water is not always obvious. Turn around and go another way.

If the vehicle stalls, leave it and seek higher ground. Rising water may engulf the vehicle; sweeping it away.

Use caution at night when it is more difficult to recognize flood dangers.

Keep children away from high water, storm drains and viaducts. Throw out any food that came in contact with flood waters.

Use flashlights (not lanterns, torches or matches) to examine buildings. Flammables may be inside.

FIND OUT IF YOU'RE IN A FLOOD ZONE

Flood maps are usually kept on file at your local county courthouse, municipal office or library. For additional information, call FEMA's Map Service Center at 1-877-FEMA-MAP.



Will You be PREPARED if You Have a POWER OUTAGE

With a stand-by generator by Hoffman Electrical & A/C, you will never have to worry about being without electricity again. Hoffman Electrical & A/C is an Authorized Generac Dealer

Benefits of Having a Stand-By Generator:

- Keep heating and A/C operating
- Keep the lights on
- Keep the sump pumps operating
- Maintain hot water in the water heater
- Keep shore power operating for bilge pumps
- Keep refrigerators operating
- Keep security systems running
- Keep the WiFi up

Keeping a comfortable home in Tampa requires a cooling system that is installed carefully, maintained consistently and repaired with precision. It takes a quality system and a quality contractor to maintain the comfort levels you need.

- Air conditioner installation
- Air conditioner replacement
- Air conditioner repair
- Air conditioner maintenance



Hoffman Electrical & A/C is a full-service HVAC company, offering all you need to keep our Florida spring and summer seasons at bay!



STACIE
SCHAIBLE

INSURANCE INFORMATION

All About Insurance

A good homeowner's (or renter's) insurance policy is critical. Discuss the following with your insurance representative:

Most homes in Florida have a special deductible for hurricane damage. Ask about your policy and potential out-of-pocket cost.

Prepare a complete home inventory with photos. Videotape if possible and store in a safe-deposit box.

Does your policy cover the actual cash value (replacement cost, less depreciation) or replacement costs?

Do you need insurance riders on special items?

Is a windstorm insurance policy required?

Do you need flood insurance?

FLOOD INSURANCE

Standard homeowner's policies do not cover flood damage, including storm surge, from a hurricane.

Flood insurance is available to all residents in all participating communities. There is usually a 30-day waiting period.

If more than half of your home is damaged and is not built to current standards, it will have to be elevated and retrofitted.

Permits for any type of construction or reconstruction in the floodplain is required.

FILING A CLAIM

Notify your insurance agent as soon as possible and have your policy number on hand.

Ask when you can expect an adjuster to visit your home.

Present photos and inventory of damaged items, including their age and value.

Have any receipts and estimates on hand.

Be patient. Cases are expedited based on severity or hardship.





KEITH
CATE

PROTECTING DOCUMENTS

How to Protect Your Documents

One of the most important things to secure during a hurricane, and the most overlooked, is your important documents. Here are a few things to remember:

Store originals in a safe-deposit box at a bank.

Choose a bank some distance from your home to reduce the risk of both places suffering the same disaster.

Get a listing of all of your bank's locations, addresses and phone numbers.

Copy all the documents in the safe-deposit box and place them in an evacuation box (preferably a fire-proof box).

Store your evacuation box some place you can get to easily. Take it with you if you evacuate.

Update documents in both boxes once or twice a year.

Write instructions concerning health and financial decisions for your family in the event you become incapacitated.

If you own a home, consider opening a home equity line of credit so emergency funds will be available.

FOR EVACUATION BOX ONLY:

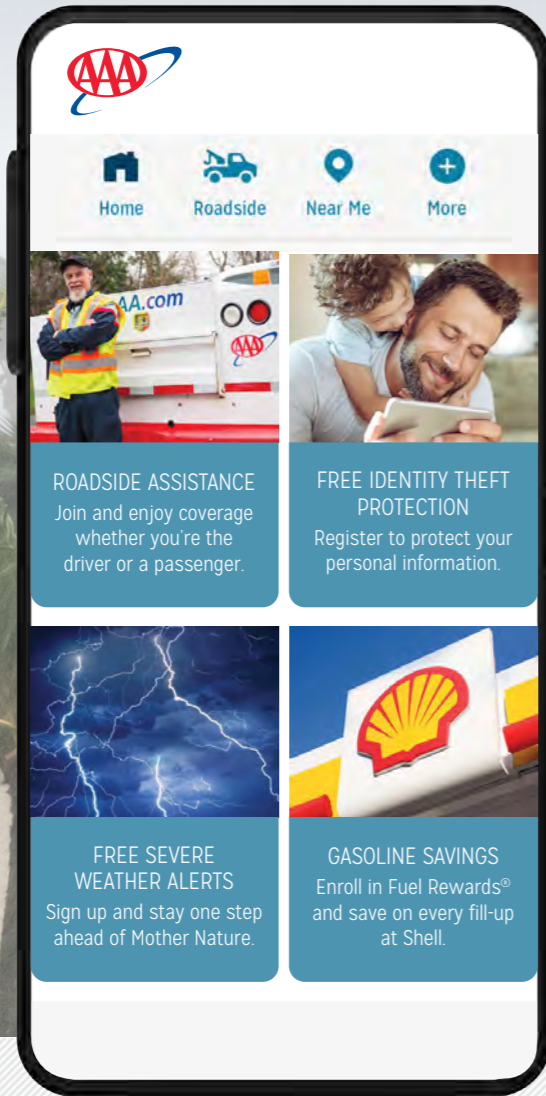
- **Safe-deposit** box information (location, contents and key)
- **Cash**, a few rolls of quarters and traveler's checks

SAFE-DEPOSIT BOX OR EVACUATION BOX:

- Insurance policies (life, auto, homeowners, renters, etc.)
- Copies of health insurance information (insurance card, doctor's name and number, prescriptions, allergies and immunizations)
- Photocopy of driver's license
- Birth, Death and Marriage certificates
- Social Security card
- Passport
- Will and living will
- Mortgage/property deeds
- Adoption papers
- Military records
- Car titles
- Trust documents
- Tax return(s)
- Written instructions for family members
- List of emergency contacts, (family, friends, lawyer, financial advisors, etc.)
- Personal property inventory (item description, serial number, receipt and photograph or video)

OTHER DOCUMENTS TO CONSIDER:

- Home improvement records /receipts
- Warranties and receipts for major purchases
- Appraisals of jewelry, collectibles, artwork, etc.
- Credit card records
- Retirement account records
- Recent checking, savings and investment account statements
- Rental agreement and/or lease
- Recent pay stub and employee benefits information
- Backup disks of critical computerized information
- Negatives of irreplaceable personal photographs (with protective plastic sleeves)



AAA takes some of the worry out of hurricane season.

Add peace of mind to every day with a AAA Membership. No matter what the season, you'll have AAA's legendary roadside assistance coverage every time you're on the road, plus a variety of member-only benefits that provide AAA savings and security all year.

Take advantage of member benefits during storm season and all year.



24/7 AAA Roadside Assistance
Coverage as the driver or a passenger¹



FREE Identity Theft Protection
Protection from scammers in uncertain times, a \$49 value²



FREE Severe Weather Alerts
Timely notifications of approaching weather³



Gasoline Savings
Save at least 5¢/gal at Shell when you sign up for Fuel Rewards⁴

Enjoy peace of mind every day with AAA Membership. Join today at AAA.com/DEAL

Upon activation and with proper identification, AAA will provide regular AAA services and full privileges for the new member. Roadside benefits begin three days after payment of dues. Some restrictions apply.
¹ Roadside Assistance is provided by independent facilities contracted by AAA. Coverage in taxis, limousines and other ride-sharing conveyances is excluded. Visit AAA.com/MemberHandbook for details about member benefits, including any limitations or restrictions. Offers, terms, conditions and policies are subject to change without notice. Savings partners subject to change. ² ProtectMyID Essential, ProtectMyID Deluxe and ProtectMyID Platinum are provided by ConsumerInfo.com, Inc., an Experian company. To be eligible to enroll in ProtectMyID Essential, ProtectMyID Deluxe or ProtectMyID Platinum you must be 18 years of age or older and a current valid AAA Member with a valid email address. Products subject to change or termination at any time without notice. Certain terms conditions and restrictions apply. Valid AAA membership required at time of enrollment. ³ Standard text messaging rates apply. You must enroll to receive benefits. ⁴ Restrictions apply. To qualify for this Extended Gold Status offer, you must be a member of AAA with a linked Fuel Rewards[®] account (via www.AAA.com/Shell). Limit 20 gal. See www.AAA.com/Shell for full terms and conditions. 20-MS-0341C

MUST HAVE SUPPLIES

Your Hurricane Checklist

NONPERISHABLE ITEMS

- Canned Meat
- Canned Fruits and Vegetables
- Canned Soups and Chili
- Dried Foods
- Dried Fruits and Nuts
- Cereal
- Crackers and Cookies
- Coffee, Tea or Drink Boxes
- Peanut Butter and Jelly
- Pudding
- Powdered Milk
- Evaporated Milk or Parmalat Milk

- Cash (ATMs may not work after the storm)
- Drinking Water (at least a 7-day supply; 1 gallon per person per day)
- Prescription Medicine (2-week supply)
- Two Ice Chests w/Ice (one for ice, one for food)
- Baby Supplies (diapers, wipes, baby food/formula)
- Manual Can Opener
- Flashlights / Lanterns
- Battery-operated Radio and Clock (TV if available)
- Spare Batteries (2 spare sets for each device)
- Toilet Paper and Hygiene Items
- First Aid Kit
- Bleach for Sterilization (unscented with Hypochlorite the only active ingredient)
- Iodine or Water Purification Tablets
- Disposable Plates, Glasses and Utensils
- Plastic Garbage Bags
- Disinfectant
- Soap, Hand Sanitizer and Dish Detergent
- Insect Repellent and Sunscreen
- Corded, Nonelectric Phone
- Camera and Film
- Books, Magazines, Toys
- Plastic Sheeting / Tarp
- Duct or Masking Tape
- Nails, Rope, Lumber, Tools
- Rain Gear
- Fire Extinguisher
- Fuel for Generators and Cars
- Propane Gas (for grills)
- Charcoal and Lighter Fluid
- Waterproof Matches



GENERATOR SAFETY

Things to Consider Before You Buy

Before buying a generator, consider the following:

What appliances will you run?
Do you need a portable or stationary generator?
Do you need multiple outlets or multiple types of outlets?

OTHER TIPS TO CONSIDER:

Never run a generator indoors OR in your garage. Find a well-ventilated area away from your home.

Do not connect your generator directly to your home's wiring. Always use heavy-duty, indoor/outdoor rated extension cords to connect to the generator.

Do not attempt to refuel your generator while it is running. Turn off all appliances connected to the generator, then turn off the generator. Let it cool before you attempt to refuel.

Read and follow the manufacturer's guidelines listed in your owner's manual for correct operating procedures and power output capabilities. Don't try to run more appliances than your generator can handle.

Check the oil every time you add gas.

Plug appliances directly into the generator.

Save gas by alternating appliances. For example, refrigerators can be kept cool by supplying power eight hours a day. Do not store fuel indoors. Gasoline (and other flammable liquids) should be stored outside of living areas in properly labeled, non-glass safety containers. They should not be stored in a garage if a fuel-burning appliance is in the garage. The gasoline vapors can travel invisibly along the ground and easily be ignited.

Always have a fully charged, approved fire extinguisher located near the generator.

USING YOUR COUNTY MAP

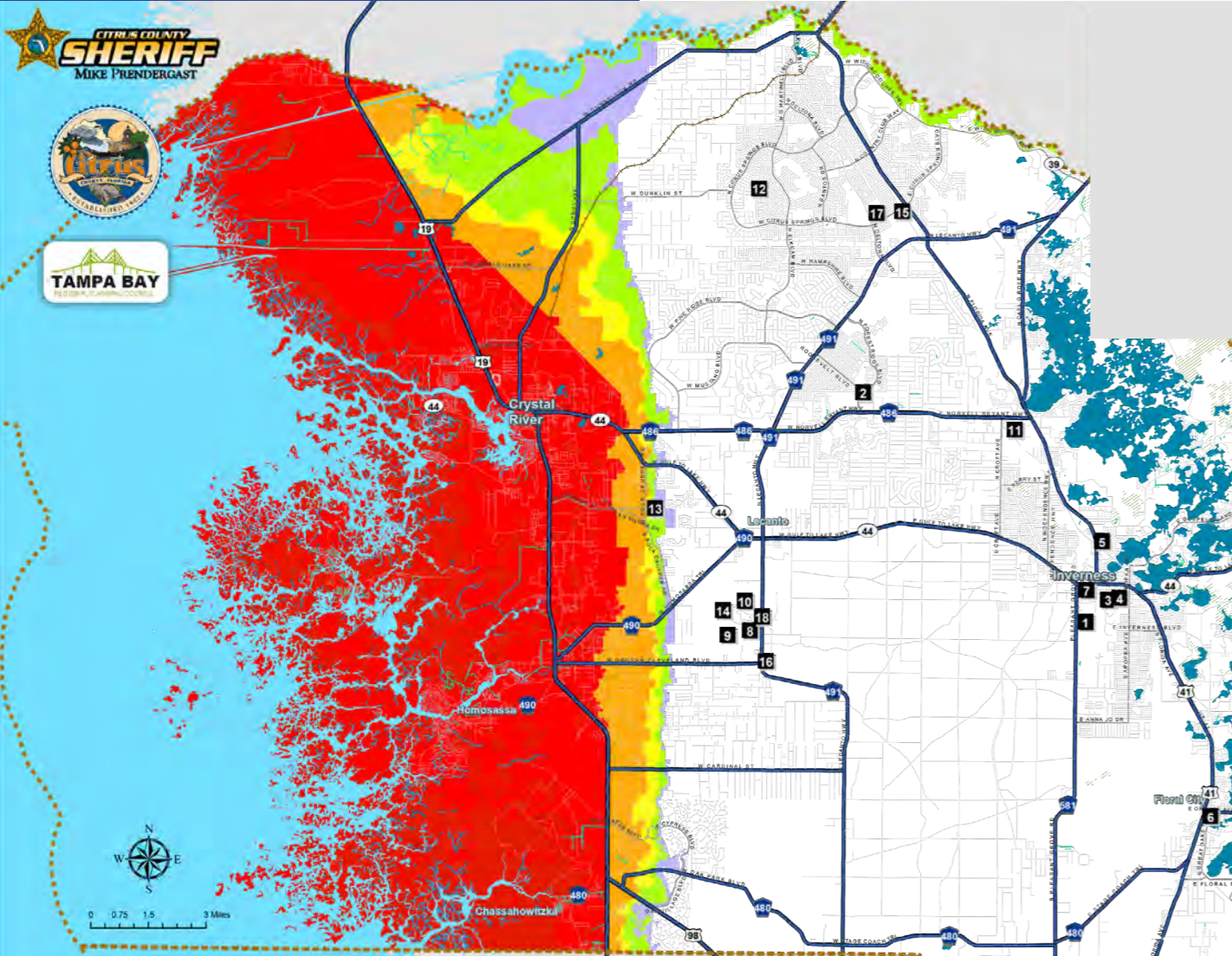
Before you enter the Maps Part of this Guide

- 1 Locate where you live and work on the map.
- 2 Determine whether you are in an evacuation area, and if so, what level (**color** explained in the Legend).
If you are in an evacuation area, or mobile home/manufactured home/RV, decide where you will go if ordered to evacuate.
Your choices include:
 - Home of a relative or friend outside the evacuation zone
 - Hotel/motel outside the evacuation zone (make arrangements early)
 - Leave the area entirely
 - As a last resort go to a public shelter
- 3 If you must go to a public shelter, **use your county map to decide which one is convenient.** Make sure you verify the shelter is open before you go. Many shelters are local schools. The abbreviations ES, MS, and HS (elementary school, middle school, and high school) are used on the shelter list.

HURRICANE THREAT

- **The colored areas** on the maps are vulnerable to storm surge. Storm surge is the saltwater flooding that rushes over coastal areas when the core of the hurricane crosses land.
- **Storm surge causes** a path of destruction wiping out structures in its path. This is a life-threatening situation for anyone who ignores evacuation orders and stays in vulnerable areas.
- **Hurricanes are categorized** on a scale of 1 to 5 depending on wind strength. The evacuation zones are color-coded to designate the level of storm surge likely to occur with the five categories.
- **If you live in an area** ordered to evacuate, gather your emergency supplies, secure your home and leave immediately. Failure to obey an evacuation order is a violation of Florida law.
- **Note: All those** in mobile homes/manufactured homes/RVs must evacuate for all evacuation orders, regardless of where you are located.

CITRUS COUNTY



Citrus County Evacuation Map

Find your closest **Evacuation Shelter** on the map.

#	Evacuation Shelter	Address
1	PLEASANT GROVE ELEMENTARY SCHOOL	630 PLEASANT GROVE ROAD, INVERNESS
2	FOREST RIDGE ELEMENTARY SCHOOL	2927 NORTH FOREST RIDGE BLVD., HERNANDO
3	CITRUS HIGH SCHOOL	600 WEST HIGHLAND BLVD., INVERNESS
4	INVERNESS PRIMARY SCHOOL	206 SOUTH LINE AVENUE, INVERNESS
5	INVERNESS MIDDLE SCHOOL	1950 U.S. HIGHWAY 41 NORTH, INVERNESS
6	FLORAL CITY ELEMENTARY SCHOOL	8457 EAST MARVIN STREET, FLORAL CITY
7	WITHLACOCHEE TECHNICAL COLLEGE (RECEPTION CENTER)	1201 WEST MAIN STREET, INVERNESS
8	LECANTO PRIMARY SCHOOL	3790 WEST EDUCATIONAL PATH, LECANTO
9	LECANTO MIDDLE SCHOOL	3800 WEST EDUCATIONAL PATH, LECANTO
10	LECANTO HIGH SCHOOL	3810 WEST EDUCATIONAL PATH, LECANTO
11	HERNANDO ELEMENTARY SCHOOL	2975 E TRAILBLAZER LANE, HERNANDO
12	CITRUS SPRINGS ELEMENTARY SCHOOL	3570 WEST CENTURY BLVD., CITRUS SPRINGS
13	ROCK CRUSHER ELEMENTARY SCHOOL	814 SOUTH ROCK CRUSHER ROAD, HOMOSASSA
14	CREST SCHOOL	2600 SOUTH PANTHER PRIDE DRIVE, LECANTO
15	CITRUS SPRINGS MIDDLE SCHOOL	150 WEST CITRUS SPRINGS BLVD., CITRUS SPRINGS
16	CENTRAL FLORIDA COMMUNITY COLLEGE	3800 SOUTH LECANTO HIGHWAY, LECANTO
17	CENTRAL RIDGE ELEMENTARY SCHOOL	185 WEST CITRUS SPRINGS BLVD., CITRUS SPRINGS
18	RENAISSANCE CENTER	3630 WEST EDUCATIONAL PATH, LECANTO

County Evacuation Guidelines

Potential Storm Surge Heights (in feet)

EVACUATION LEVELS	Potential Storm Surge Heights (in feet)	Guidelines
A	Up to 15'	Evacuate red areas and all mobile home/RV residents
B	Up to 20'	Evacuate red and orange areas and all mobile home/RV residents
C	Up to 28'	Evacuate red, orange, and yellow areas and all mobile home/RV residents
D	Up to 35'	Evacuate red, orange, yellow, and green areas and all mobile home/RV residents
E	Up to 42'	Evacuate red, orange, yellow, green, and purple areas and all mobile home/RV residents

Areas shown in white are non-evacuation zones

Evacuation Routes

My Evacuation Level is (fill below):

Residents in mobile homes, boats, RVs, and manufactured homes **MUST EVACUATE** no matter where you are located in the county.

CHECK YOUR EVACUATION LEVEL

- A) Red | You evacuate for all colors
- B) Orange | You evacuate for all but red
- C) Yellow | You evacuate for all but red + Orange
- D) Green | You evacuate for Green + Purple
- E) Purple | You evacuate for only purple

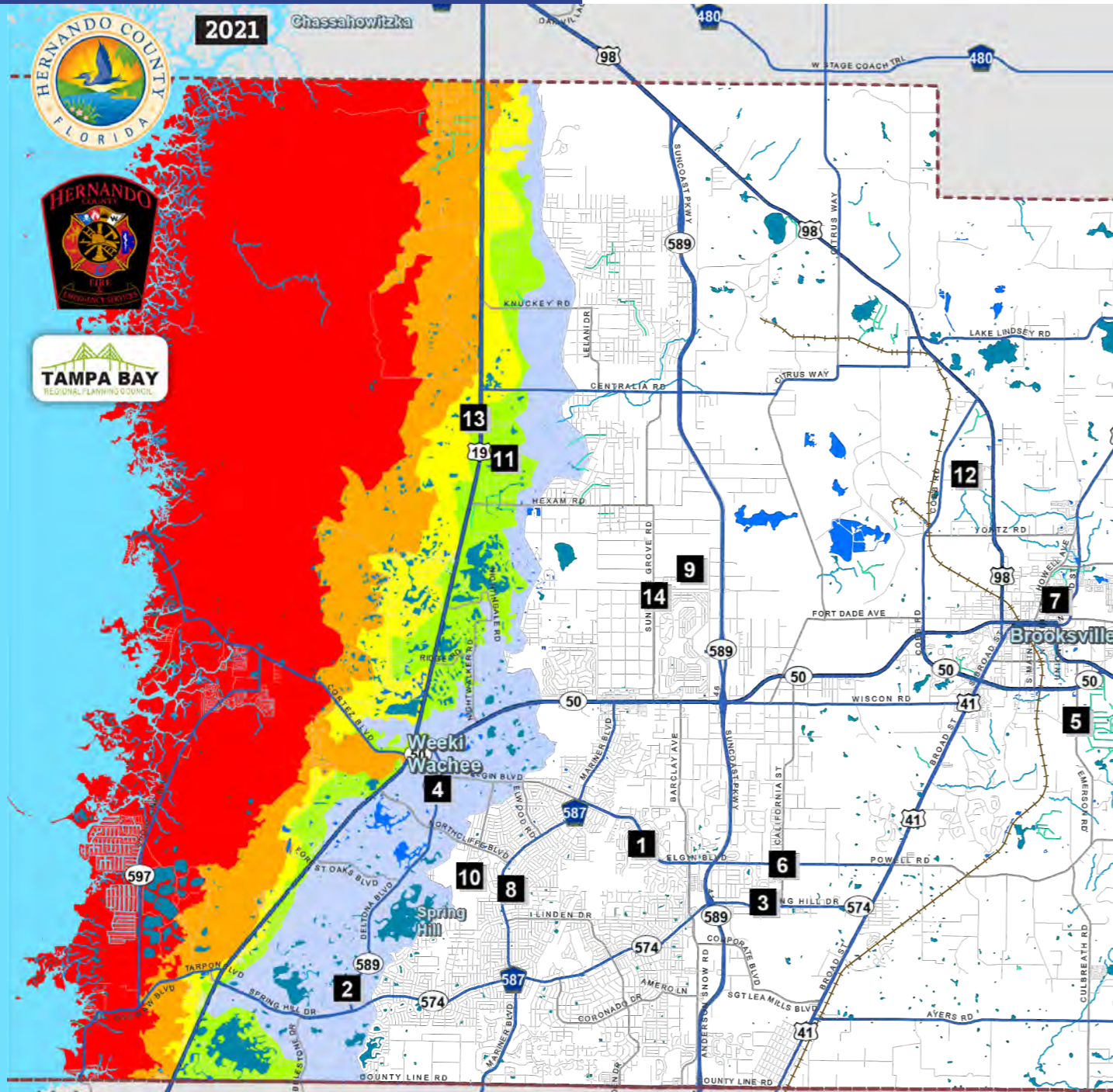
All Mobiles evacuate as if in a RED Zone.



NOT ALL SHELTERS MAY BE OPEN!

Citizens are urged to listen to local television or radio stations, or visit the Sheriff's Office website, sheriffcitrus.org, to find out which shelters are going to be opened.

HERNANDO COUNTY



Hernando County Evacuation Map

Find your closest shelter on the map.

#	Shelter Name	Address
1	Challenger K-8 School	13400 Elgin Blvd., Spring Hill, 34609
2	Deltona Elementary School	2055 Deltona Blvd., Spring Hill, 34606
3	Nature Coast Technical High School	4057 California St., Brooksville, 34604
4	Fox Chapel Middle School	9412 Fox Chapel Lane, Spring Hill, 34606
5	Moton Elementary School	7175 Emerson Road, Brooksville, 34601
6	Chocachatti Elementary School	4135 California St., Brooksville, 34604
7	Hernando High School	700 Bell Ave., Brooksville, 34601
8	Springstead High School	3300 Mariner Blvd., Spring Hill, 34609
9	West Hernando Middle School	14325 Ken Austin Prkwy, Brooksville, 34613
10	Explorer K-8 School	10252 Northcliffe Blvd., Spring Hill, 34608
11	Weeki Wachee High School	12150 Vespa Way, Weeki Wachee, 34614
12	D.S. Parrott Middle School	19220 Youth Drive, Brooksville, 34601
13	Winding Waters K-8 School	12240 Vespa Way, Weeki Wachee, 34614
14	Central High School	14075 Ken Austin Prkwy, Brooksville, 34613

Special Needs Shelter *Only*

Pet-Friendly Shelter



hernandocounty.us/em
Scan this code with your smart phone's barcode reader.

County Evacuation Guidelines

Potential Storm Surge Heights (in feet)

EVACUATION LEVELS	Surge Height	Guidelines
A	Up to 14'	Evacuate red areas and all mobile home/RV residents
B	Up to 23'	Evacuate red and orange areas and all mobile home/RV residents
C	Up to 26'	Evacuate red, orange, and yellow areas and all mobile home/RV residents
D	Up to 32'	Evacuate red, orange, yellow, and green areas and all mobile home/RV residents
E	Up to 40'	Evacuate red, orange, yellow, green, and purple areas and all mobile home/RV residents

Areas shown in white are non-evacuation zones

Evacuation Routes

My Evacuation Level is (fill below):

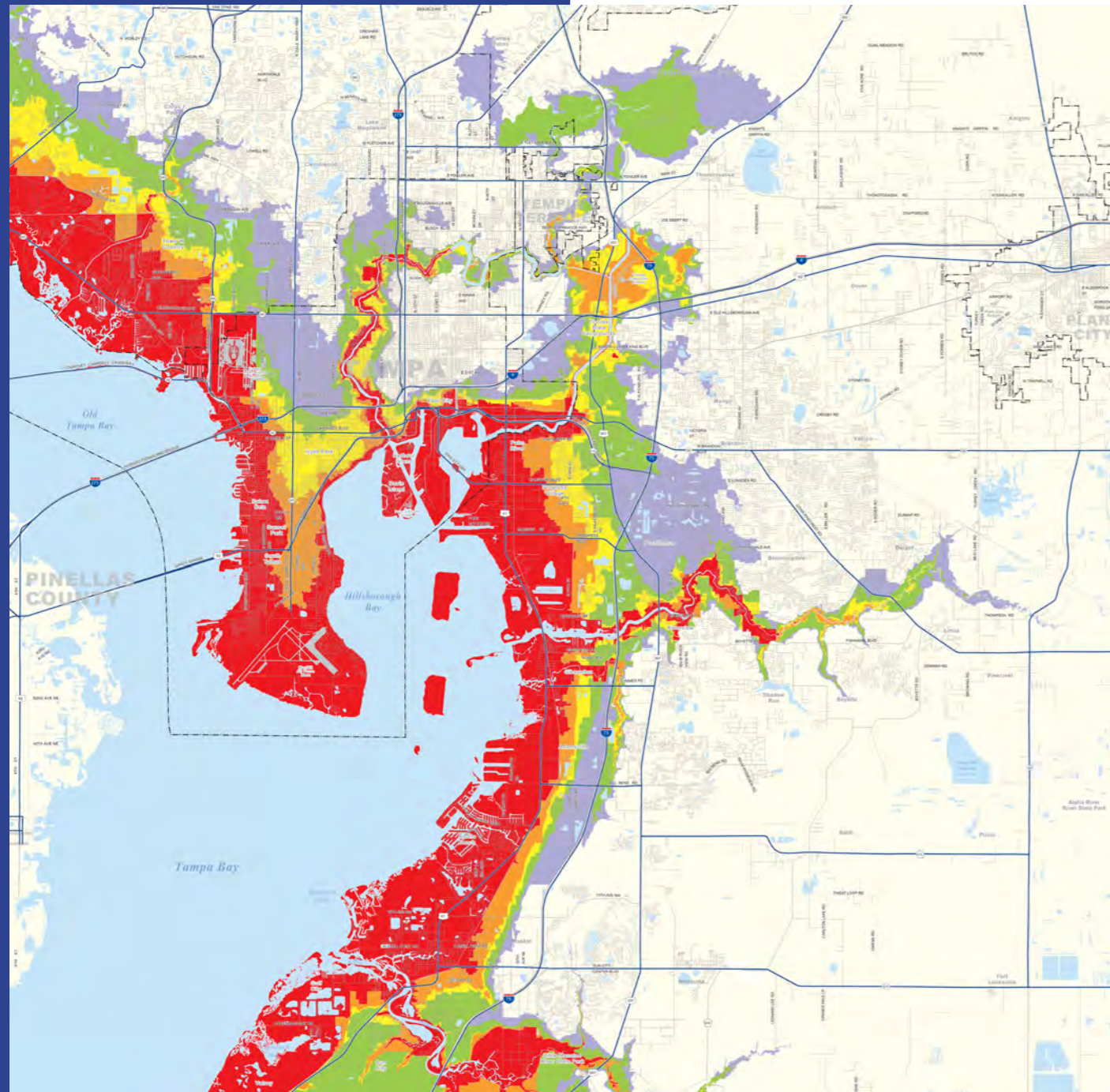
Residents in mobile homes, RVs, boats, and manufactured homes **MUST EVACUATE** no matter where they are located in the county.

CHECK YOUR EVACUATION LEVEL

- A) Red | You evacuate for all colors
- B) Orange | You evacuate for all but red
- C) Yellow | You evacuate for all but red + Orange
- D) Green | You evacuate for Green + Purple
- E) Purple | You evacuate for only purple

All Mobiles evacuate as if in a RED Zone.

HILLSBOROUGH COUNTY



HILLSBOROUGH COUNTY EVACUATION ZONES

2021 Storm Season



Hillsborough County Florida

Legend

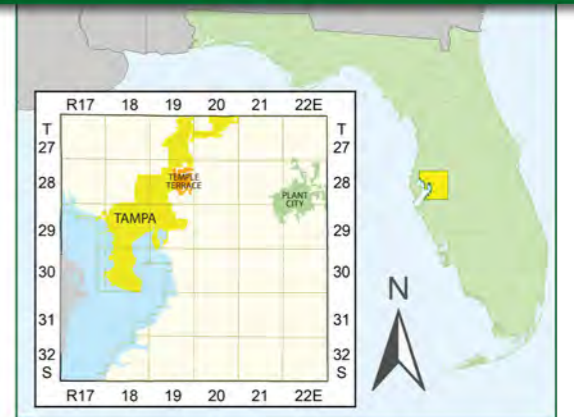
- Interstate
- US Highway
- State Highway
- County Highway
- Evacuation Route

Evacuation Zones

EVACUATION LEVEL	WIND VELOCITY (MPH)	POTENTIAL TIDE HEIGHTS (FT)	AREAS TO BE EVACUATED
A	74 to 85	To 11'	Red areas plus all mobile home residents.
B	96 to 110	To 17'	Red and Orange areas plus all mobile home residents.
C	111 to 130	To 22'	Red, Orange, and Yellow areas plus all mobile home residents.
D	131 to 155	To 31'	Red, Orange, Yellow, and Green areas plus all mobile home residents.
E	156 and over	To 38'	Red, Orange, Yellow, Green, and Purple areas plus all mobile home residents.

Data provided courtesy of the Tampa Bay Regional Planning Council. Visit www.tbrcpc.org for further information.

Locator Map



NOTE: Every reasonable effort has been made to assure the accuracy of this map. Hillsborough County does not assume any liability arising from use of this map. THIS MAP IS PROVIDED WITHOUT WARRANTY OF ANY KIND, either expressed or implied, including, but not limited to, the implied warranties of merchantability and fitness for a particular purpose.

SOURCES: This map has been prepared for the inventory of real property found within Hillsborough County and is compiled from recorded deeds, plats, and other public records; it has been based on BEST AVAILABLE data.

Users of this map are hereby notified that the aforementioned public primary information sources should be consulted for verification of the information contained on this map.



April 14, 2021

601 E Kennedy Blvd., Tampa, FL 33602 (813) 272-5810 printroom@hillsboroughcounty.org

As we follow updates to COVID-19, the healthy & safety of our customers and employees is our priority.



PROTECT YOUR HOME & FAMILY FROM HURRICANES

with Replacement Windows from a Company You Can Trust!

When it Comes to Replacing Your Windows You Can Trust WEATHER TITE WINDOWS

- Energy Efficiency. Every window and door we install exceeds Energy Star requirements.
- Our Windows, Doors and Sliding Glass Doors, are Miami-Dade Certified providing the utmost protection for you and your family.
- Lifetime Guarantee on Installation and Product. Our employees are highly trained in window installation from PGT University to ensure the perfect fit for the lifetime of your windows.
- Our "Triple Check Process" Guarantees Accuracy from Start to Finish. This high level of attention to detail ensures your installation goes right the first time.
- Weather Tite Windows is an Exclusive PGT Diamond Dealer for Replacement Windows meaning our reputation has earned us priority access to PGT customer service ensuring a smooth, hassle-free process both before and after installation of your windows.
- Our Trust Program Offers NO MONEY DOWN Options or Pay at Installation. *We take all the risk so you don't have to.
- We Want You to Be 5 STAR WEATHER TITE HAPPY!
Your satisfaction is our highest priority.



Call us today, anytime day or night, to schedule your **FREE, NO OBLIGATION** estimate!

813-908-0131 | WEATHERTITOWINDOWS.COM



EDWARD R. MURROW
AWARDS
— 2021 —

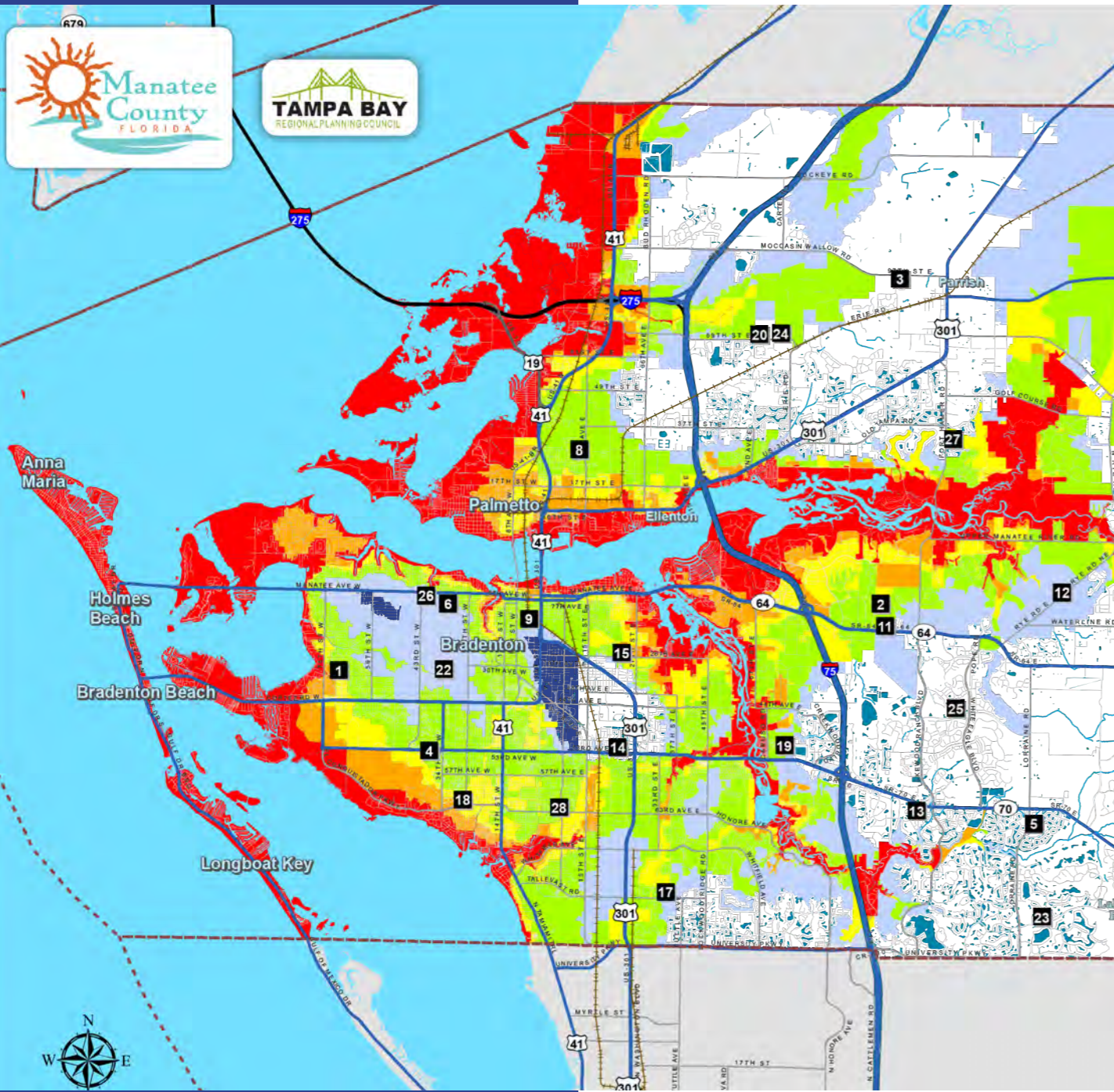


WINNER
of the Regional

**EDWARD R. MURROW
AWARD**

for Outstanding Achievement in
DIGITAL JOURNALISM

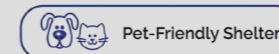
MANATEE COUNTY



Manatee County Evacuation Map

Find your closest evacuation shelter on the map.

#	Pets Allowed	Shelter Name	Address
18		Bayshore Elementary School	6120 26th Street West, Bradenton
19		Braden River High School	6545 State Road 70 East, Bradenton
13		Braden River Middle School	6215 River Club Blvd., Bradenton
24		Buffalo Creek Middle School	7320 69th Street East, Palmetto
28		Daughtrey Elementary School	515 63rd Ave. East, Bradenton
2		Freedom Elementary School	9515 State Road 64 East, Bradenton
25		Gullet Elementary School	12125 44th Ave. East, Bradenton
11		Haile Middle School	9501 State Road 64 East, Bradenton
3		Harvey Elementary School	8610 115th Ave. East, Parrish
15		Johnson-Wakeland School of IB	2121 26th Ave. East, Bradenton
17		Kinnan Elementary School	3415 Tallevast Road, Sarasota
4		Lee Middle School	4000 53rd Avenue West, Bradenton
6		Manatee High School	902 33rd Street Court West, Bradenton
5		McNeal Elementary School	6325 Lorraine Road, Bradenton
26		Miller Elementary School	601 43rd Street West, Bradenton
20		Mills Elementary School	7200 69th Street East, Palmetto
7		Myakka City Elementary School	37205 Manatee Ave., Myakka City
14		Oneco Elementary School	5214 22nd Street Court East, Bradenton
22		Prine Elementary School	3801 Southern Parkway, Bradenton
9		Rodgers Garden Elementary School	515 13th Ave West, Bradenton
1		Seabreeze Elementary School	3601 71st Street West, Bradenton
8		Tillman Elementary School	1415 29th Street East, Palmetto
27		Williams Elementary School	3404 Fort Hamer Road, Parrish
23		Willis Elementary School	14705 The Masters Avenue, Bradenton
12		Witt Elementary School	200 Rye Road, Bradenton



County Evacuation Guidelines

Potential Storm Surge Heights (in feet)

EVACUATION LEVELS	Surge Height	Guidelines
A	Up to 11'	Evacuate red areas and all mobile home/RV residents
B	Up to 17'	Evacuate red and orange areas and all mobile home/RV residents
C	Up to 21'	Evacuate red, orange, and yellow areas and all mobile home/RV residents
D	Up to 26'	Evacuate red, orange, yellow, and green areas and all mobile home/RV residents
E	Up to 31'	Evacuate red, orange, yellow, green, and purple areas and all mobile home/RV residents

Areas shown in white are non-evacuation zones

Evacuation Routes

My Evacuation Level is (fill below):

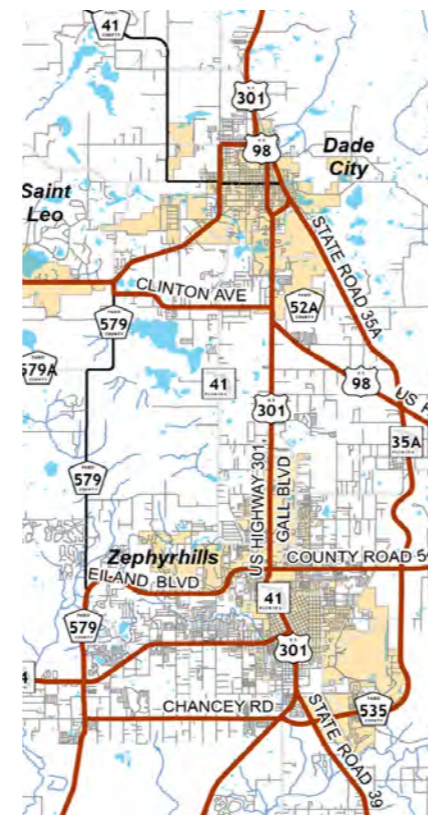
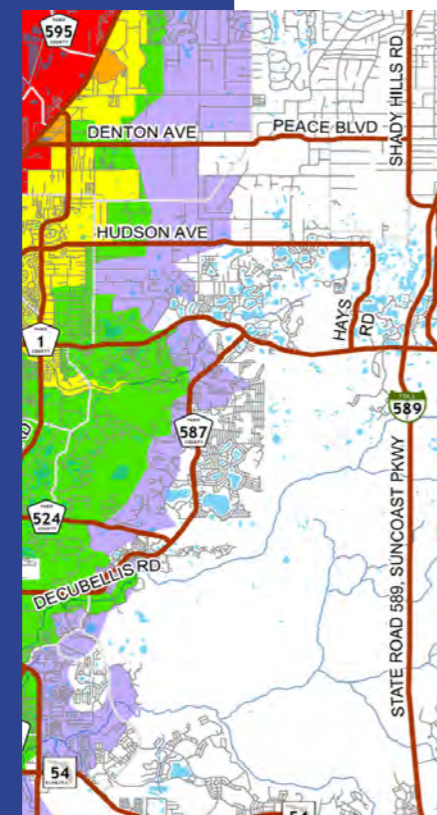
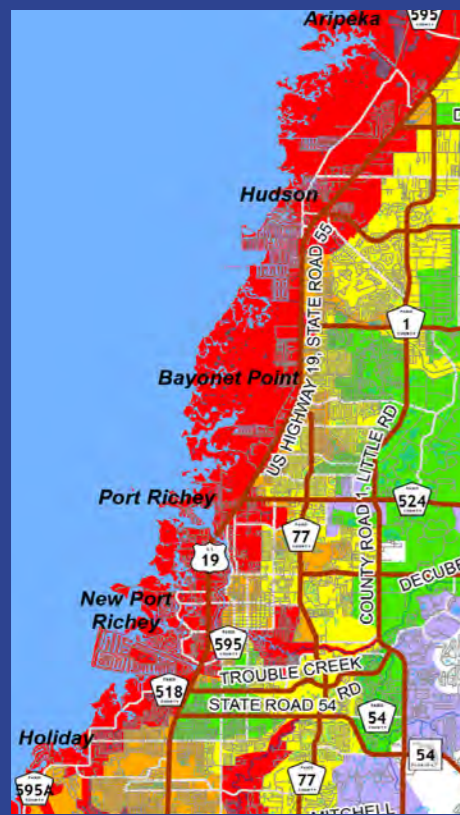
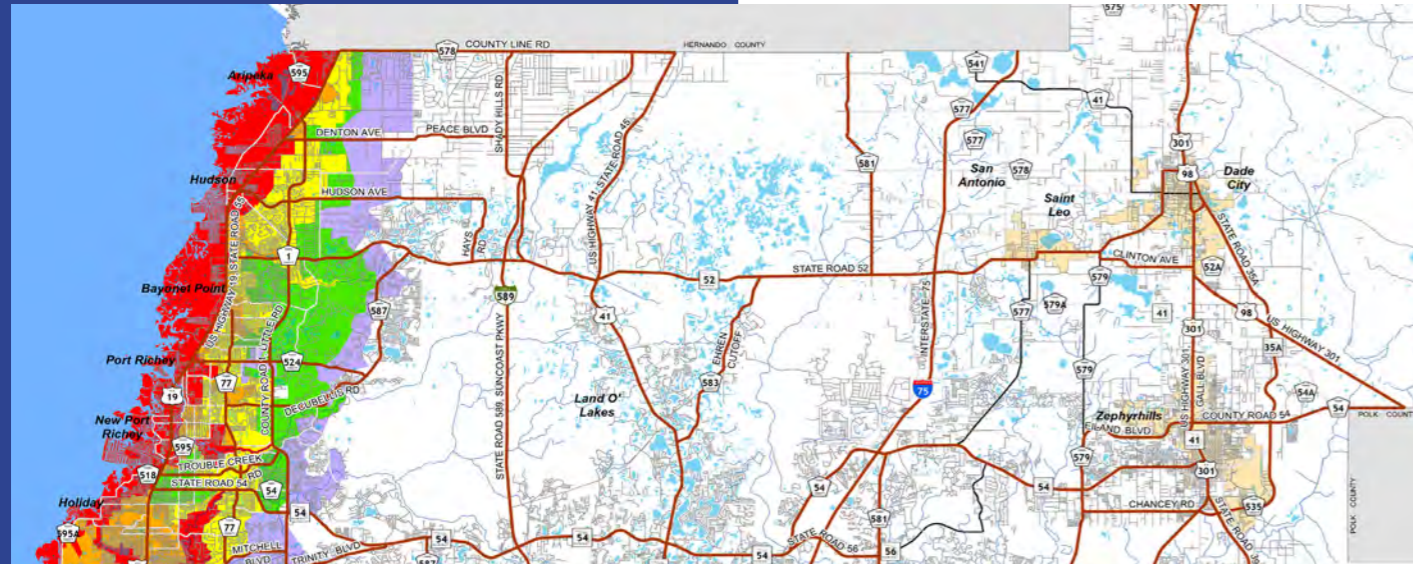
Residents in mobile homes, boats, RVs, and manufactured homes **MUST EVACUATE** no matter where you are located in the county.

CHECK YOUR EVACUATION LEVEL

- A) Red | You evacuate for all colors
- B) Orange | You evacuate for all but red
- C) Yellow | You evacuate for all but red + Orange
- D) Green | You evacuate for Green + Purple
- E) Purple | You evacuate for only purple

All Mobiles evacuate as if in a RED Zone.

PASCO COUNTY



- Evacuation Routes
- Arterial Road
- Collector Road
- Residential Road
- City Limits

Evacuation Zone

- Level A
- Level B
- Level C
- Level D
- Level E
- None



Serving Our Community
to Create a Better Future

LEGEND

Evacuation Levels

- Level A - Evacuate red areas and all manufactured home residents
- Level B - Evacuate red and orange areas and all manufactured home residents
- Level C - Evacuate red, orange, and yellow areas and all manufactured home residents
- Level D - Evacuate red, orange, yellow, and green areas and all manufactured homes
- Level E - Evacuate red, orange, yellow, green, and purple areas and all manufactured homes

Potential Storm Tide Heights (FT)

- To 11'
- To 17'
- To 22'
- To 30'
- To 36'



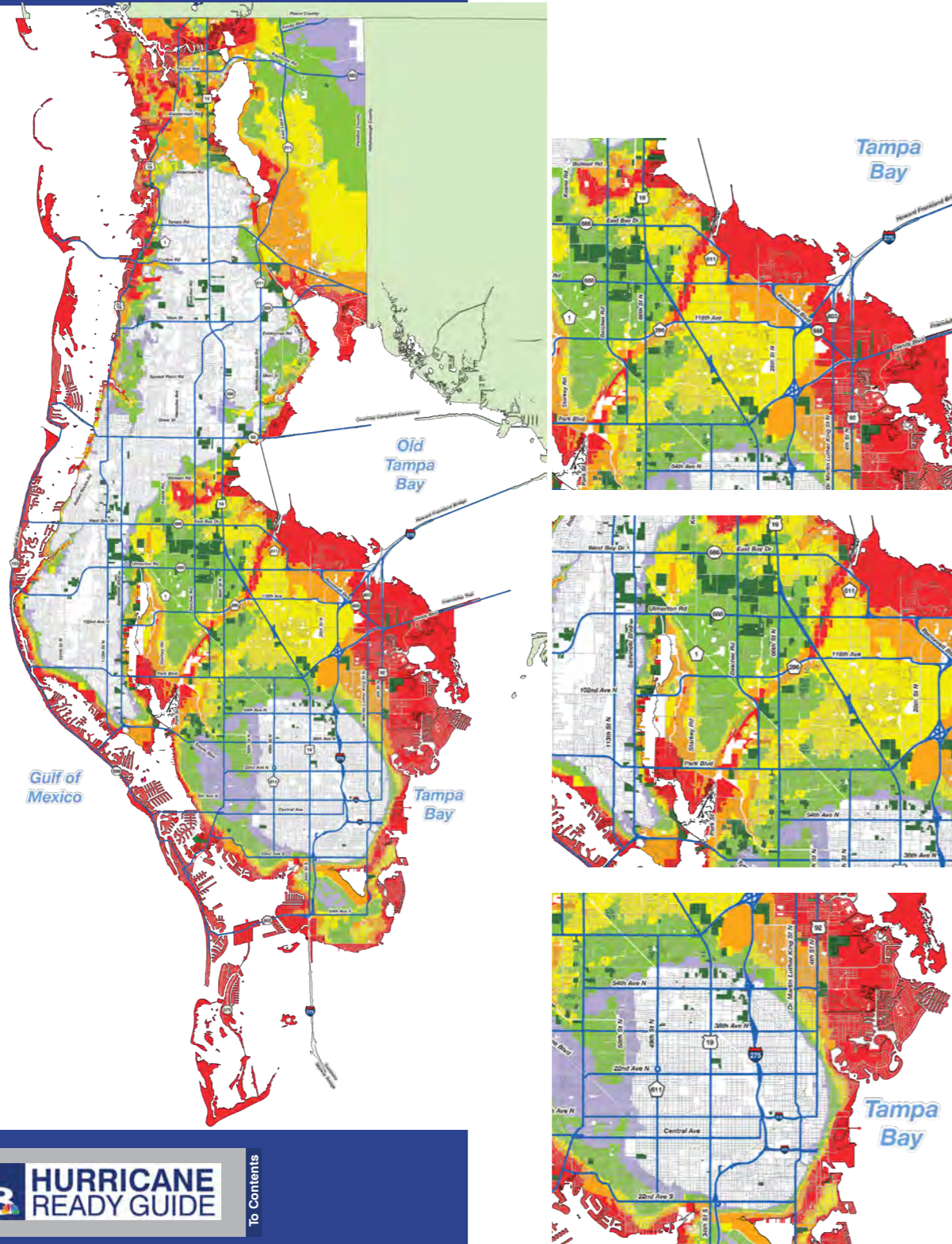
This map is for informational purposes only. The data contained herein is not collected under the supervision of, or approved by, a licensed surveyor. It is not intended for any legal use. The data does not meet the minimum technical standards under the Florida Administrative Code 61G17-6. The Pasco County Board of County Commissioners does not accept any responsibility for errors or omissions of any kind contained in the data herein. All products and derivations from the data contained herein must retain this disclaimer.

Date Saved: 3/5/2020 7:30:19 AM

Document Path: S:\GIS\DarrylJohnson\MXD\EOC\2019 Disaster Guide\Evac_and_Shelter_Map_Update.mxd

Author: Itelva

PINELLAS COUNTY



PINELLAS COUNTY ONLINE RESOURCE

“Please note that not all shelters will be open for every evacuation. There may also be additional locations that are made available for sheltering. It is very important that you check for updates on available shelters before finalizing your plans.”

Shelters with addresses are listed online along with an interactive view of flood zones.

Please see “Online Resources” button below.

Batteries + Bulbs®



EMERGENCY PREP SOLUTIONS PLAN NOW. STAY SAFE. WE CAN HELP.

BATTERY BACKUP & SURGE PROTECTOR
Protect your electronics & data.



POWER INVERTER
Power your AC & USB devices on the go.



FLASHLIGHTS/ HEADLAMPS
Light your home, or light your way out.



ALKALINE BATTERIES
Have extras on hand for flashlights, radios, smoke detectors & more.



PORTABLE CHARGERS
Keep them charged & ready to go so you're not relying on electricity to power your phone.



JUMP STARTERS
Keep a set in the trunk in case of emergency.



Achieva has you covered

We were there for you in the past and we will be there for you in the future

At Achieva Credit Union, we are **committed to helping our community** overcome obstacles, whether they are financial or disaster related. We are prepared to help you weather any storm. That's what being a community partner is all about.

- Loan products to help you repair and recover.
- 30,000 surcharge-free ATMs and shared branch locations nationwide .
- Access to your accounts 24/7 with online banking.

Everyone is welcome to apply! Visit us online or contact us by phone.

www.achievacu.com | 800.593.2274

ANY PURCHASE*

*Excludes Generators, Smart Home & Golf Cart Batteries

15% Off Expires 10.31.21
Limit 1 CDP10070
WHEN YOU MENTION THIS AD

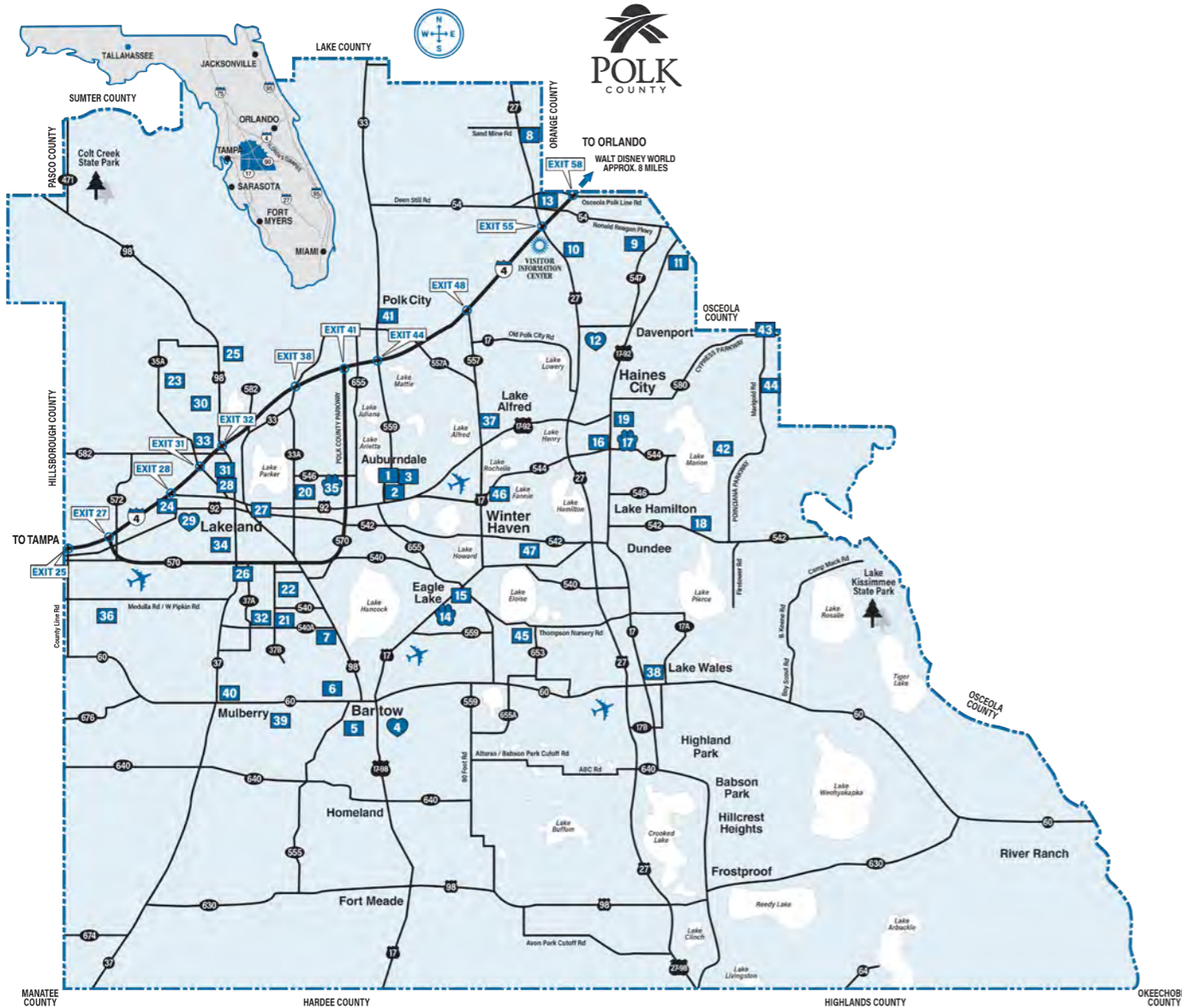
VISIT ONE OF OUR AREA LOCATIONS:

Bradenton, Brandon, Clearwater, Lake Wales, Lakeland, Lakewood Ranch, Largo, Inverness, New Port Richey, Pinellas Park, Sarasota, Sebring, Spring Hill, St. Petersburg, Sun City Center, Tampa & Winter Haven
800-677-8278 | batteriesplus.com

All registered trademarks are the property of their respective owners.

Insured by the NCUA.

POLK COUNTY



An initiative of the Polk County Board of County Commissioners



2021 POLK COUNTY PUBLIC SHELTERS POTENTIAL SHELTER LOCATIONS

- AUBURNDALE**
 - 1. Auburndale High School
 - 2. Jere L. Stambaugh Middle School
 - 3. Walter Caldwell Elementary School
- BARTOW**
 - 4. Polk County Health Department Specialty Care Units
 - 5. Bartow High School
 - 6. Stephens Elementary School
 - 7. Spessard L. Holland Elementary
- DAVENPORT**
 - 8. Citrus Ridge Academy
 - 9. Davenport School of the Arts
- EAGLE LAKE**
 - 10. Horizons Elementary School
 - 11. Loughman Oaks Elementary School
 - 12. Ridge Community High School
 - 13. Ridgeview Global Studies Academy
- HAINES CITY**
 - 14. Lake Region High School
 - 15. Pinewood Elementary School
 - 16. Alta Vista Elementary School
 - 17. Haines City High School
 - 18. Sandhill Elementary School
 - 19. Shelley S. Boone Middle School
- LAKELAND**
 - 20. Combee Elementary School
 - 21. George Jenkins High School (Freshman Academy)
 - 22. Highlands Grove Elementary School
- LAKE ALFRED**
 - 23. Kathleen Elementary School
 - 24. Kathleen High School
 - 25. Lake Gibson High School
 - 26. Lakeland Highlands Middle School
 - 27. Philip O'Brien Elementary School
 - 28. Lincoln Avenue Academy
 - 29. McKeel Academy of Technology
 - 30. Dr. N. E. Roberts Elementary School
 - 31. Rochelle School of the Arts
 - 32. Scott Lake Elementary School
 - 33. Sleepy Hill Elementary School
 - 34. Southwest Elementary School
 - 35. Tenoroc High School
 - 36. R. Bruce Wagner Elementary School
 - 37. Karen M. Siegel Academy
- LAKE WALES**
 - 38. Spook Hill Elementary School
- MULBERRY**
 - 39. Mulberry Middle School
 - 40. Purcell Elementary School
- POLK CITY**
 - 41. Donald Bronson Community Center
- POINCIANA**
 - 42. Lake Marion Creek Middle School
 - 43. Laurel Elementary School
 - 44. Palmetto Elementary School
- WINTER HAVEN**
 - 45. Chain of Lakes Elementary School
 - 46. Jewett School of the Arts
 - 47. Winter Haven High School

= Special Needs Shelter.
 = Pet-Friendly Shelter.
 = Primary Shelter.
 See reverse side for directions to individual shelters.

DO NOT PROCEED TO ANY SHELTER UNTIL YOU HAVE CONFIRMED THAT IT IS OPEN AND OPERATING.

Visit Central Florida
 For accommodations, contact
 1 (800) 828-7655 or (863) 420-2586
www.VisitCentralFlorida.org

Publix

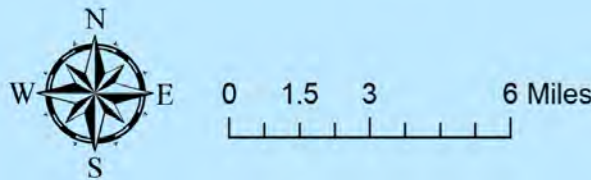
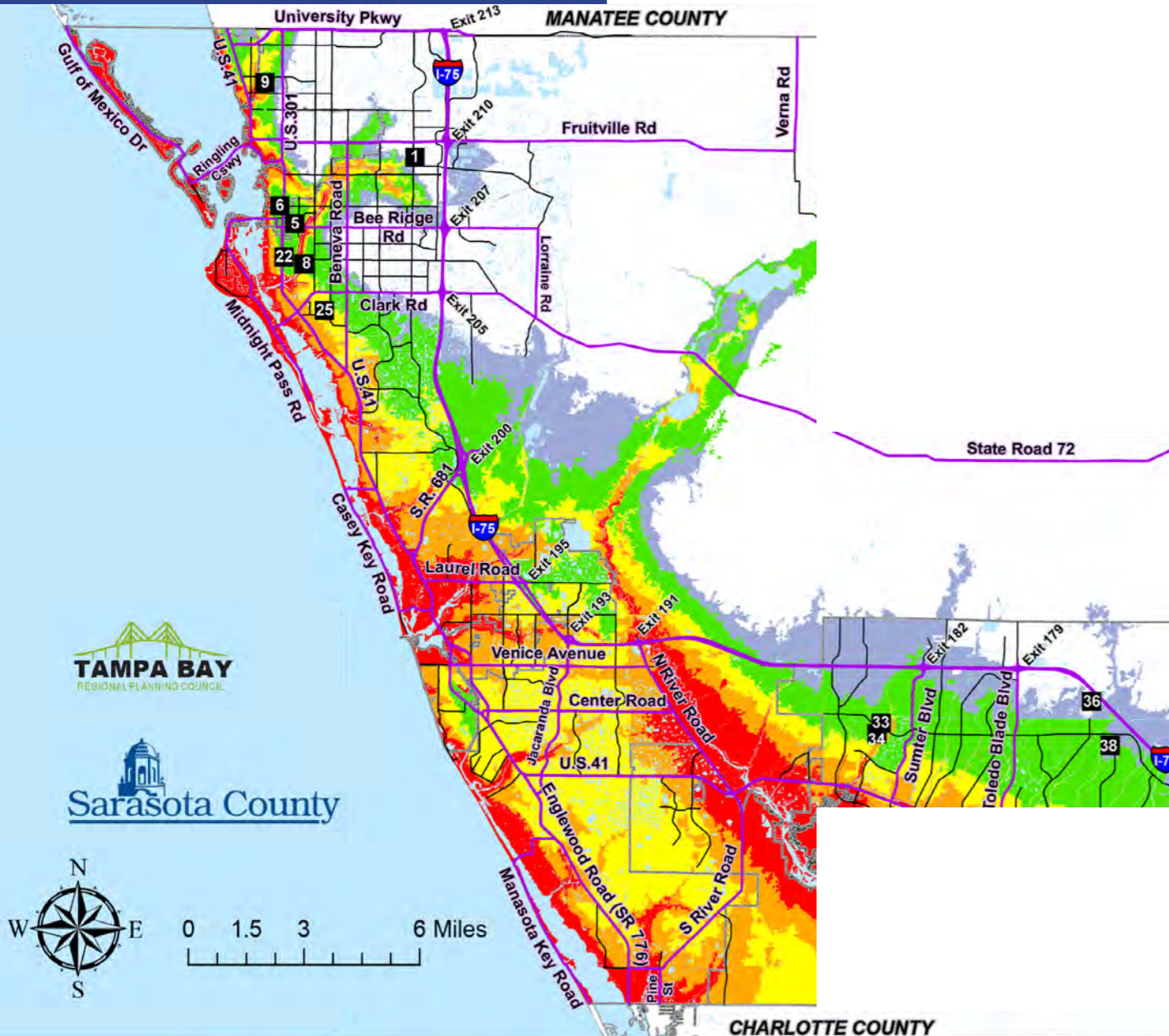
KEECHOBEE COUNTY

CITIZENS INFORMATION LINE
 (CIL) (863) 401-2234
 Toll Free: 1 (866) 661-0228
www.polk-county.net
 Facebook.com/PolkCountyEM
 Twitter@PolkEmergency

PUBLIC SHELTER POLICIES
 1. All shelters are **not** automatically activated for each possible emergency. Shelters are opened as they are needed. They are not preassigned by geographic area.
 2. For shelter information, monitor local radio and television or call the CIL at (863) 401-2234.
 3. Prepare a 7-day survival kit ready to take with you. A shelter won't have the comforts of home so make sure to take what you'll want or need.
 4. **NO PETS** (except at designated pet-friendly sites), **NO WEAPONS** and **NO ALCOHOLIC BEVERAGES** are allowed in Public Shelters.
 5. For information about pet-friendly shelters, call the Emergency Management office at (863) 298-7000 or www.polk-county.net/EM.
 6. For further information, please consult the reverse side of this brochure.



SARASOTA COUNTY



Find your closest Evacuation Center on the map

#	Evacuation Center	Address
1	Fruitville Elementary School	601 Honore Ave., Sarasota
5	Brookside Middle School	3636 S. Shade Ave., Sarasota
6	Southside Elementary School	1901 Webber St., Sarasota
8	Riverview High School	1 Ram Way, Sarasota
9	Booker High School	3201 N. Orange Ave., Sarasota
22	Phillippi Shores Elementary	4747 S. Tamiami Trail, Sarasota
25	Gulf Gate Elementary School	6500 S. Lockwood Ridge Rd., Sarasota
33	North Port High School	6400 W. Price Blvd., North Port
34	Heron Creek Middle School	6501 W. Price Blvd., North Port
36	Woodland Middle School	2700 Panacea Blvd., North Port
38	Atwater Elementary School	4701 Huntsville Ave., North Port

Dogs and Cats

All Sarasota County evacuation centers welcome properly crated and supplied dogs and cats. Current vaccination records are required for dogs and cats.

County Evacuation Guidelines

Potential Storm Surge Heights (in feet)

EVACUATION LEVELS	Surge Height	Evacuation Requirements
A	Up to 12'	Evacuate red areas and all mobile home/RV residents
B	Up to 16'	Evacuate red and orange areas and all mobile home/RV residents
C	Up to 20'	Evacuate red, orange, and yellow areas and all mobile home/RV residents
D	Up to 26'	Evacuate red, orange, yellow, and green areas and all mobile home/RV residents
E	Up to 32'	Evacuate red, orange, yellow, green, and purple areas and all mobile home/RV residents

Areas shown in white are non-evacuation zones

Evacuation Routes

Find your home's Evacuation Level at: scgov.net or ags3.scgov.net/knowyourlevel/

My Evacuation Level is (fill below):

Residents in mobile homes, boats, RVs, and manufactured homes **MUST EVACUATE** no matter where you are located in the county.

COVID-19 PRECAUTIONS

To see the latest information on hurricane evacuation centers and COVID-19, please visit scgov.net.

Masks are encouraged to be worn by all staff and evacuees. Those arriving at Sarasota County evacuation centers will be screened upon entry. There is a designated area for those who do not pass the health screening.

Once an evacuation center reaches 50% capacity, new arrivals will be given the option of going to another nearby evacuation center with more open space, if it is safe to travel. Capacity levels will continue to be decreased nearly 50% to allow for social distancing inside evacuation centers.

CHECK YOUR EVACUATION LEVEL

- A) Red | You evacuate for all colors
- B) Orange | You evacuate for all but red
- C) Yellow | You evacuate for all but red + Orange
- D) Green | You evacuate for Green + Purple
- E) Purple | You evacuate for only purple

All Mobiles evacuate as if in a RED Zone.